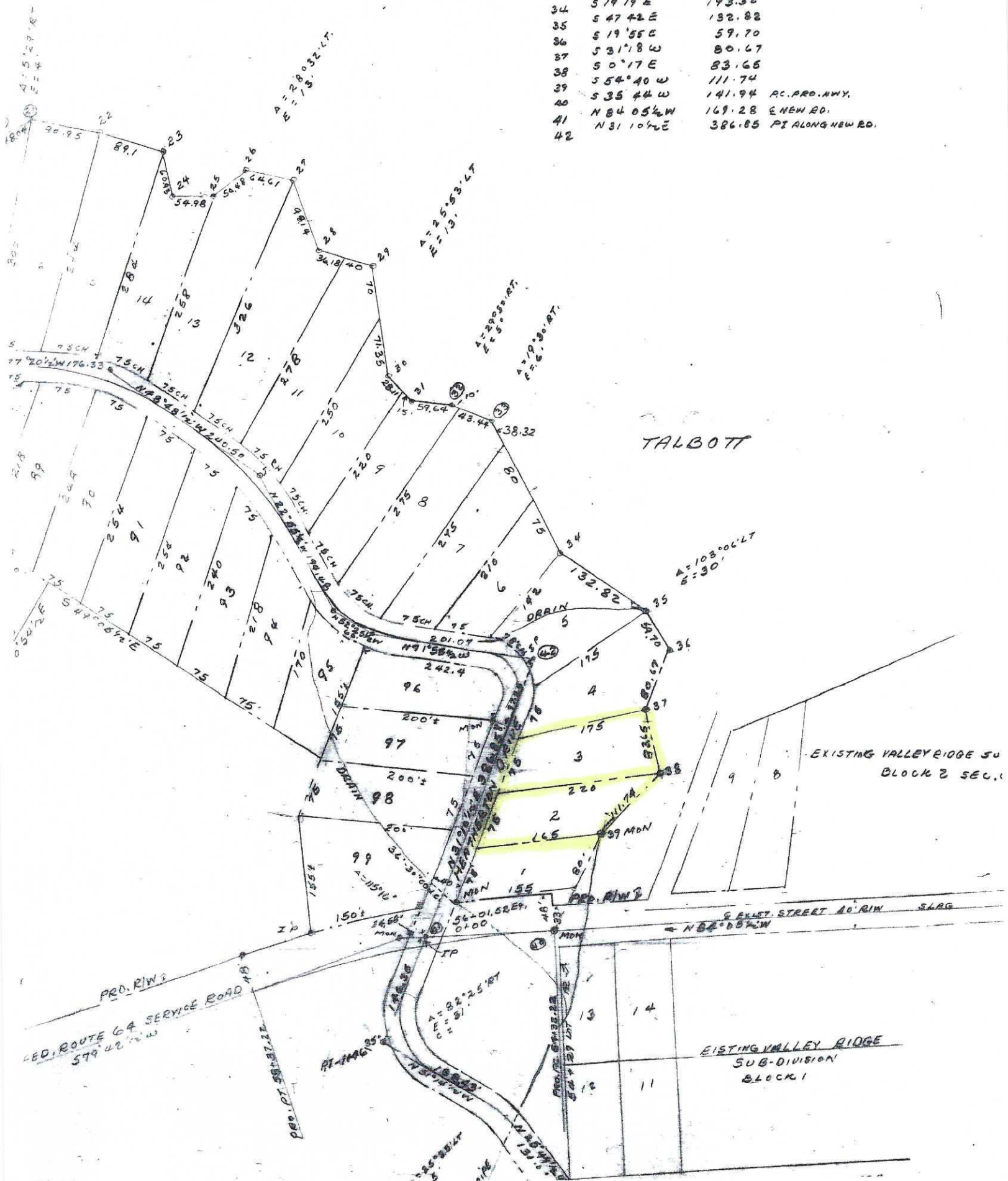


26	S 73° 08' E	64.31
27	S 71° 55' E	92.14
28	S 67° 05' E	76.18
29	S 0° 16' W	141.35
30	S 31° 47' E	43.11
31	S 78° 56' E	59.64
32	S 59° 32' E	53.44
33	S 19° 19' E	193.32
34	S 47° 42' E	132.82
35	S 19° 55' E	59.70
36	S 31° 18' W	80.67
37	S 0° 17' E	83.65
38	S 54° 40' W	111.74
39	S 35° 44' W	141.94
40	N 84° 05' W	169.28
41	N 31° 10' E	386.85
42		PI ALONG NEW RD.



TALBOTT

EXISTING VALLEY RIDGE SUB-DIVISION BLOCK 2 SEC. 1

EXISTING VALLEY RIDGE SUB-DIVISION BLOCK 1

PRO. ROUTE 64 SERVICE ROAD
S 79° 42' W 579.42

ALLEY STREET 40' R/W
N 84° 05' W

PT. 1446.35
S 78° 56' E 59.64

A = 82° 25' 18"
S 19° 55' E 59.70

A = 103° 06' LT
S = 30'

A = 25° 53' LT
E = 19.13

A = 28° 32' LT
E = 19.32

A = 20° 30' RT
E = 6.00

A = 19° 30' RT
E = 6.00

A = 51° 29' RT
E = 4.51